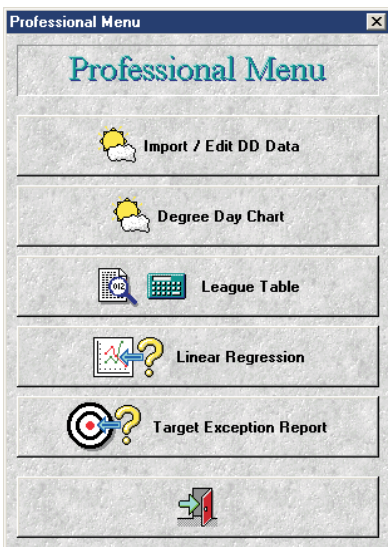


Special Professional Extensions to the Eco Tools software include;

- An "Automated daily Minimum & Maximum deviation from Target check. Saves the busy Energy Manager valuable time every day Thereby directing attention only where needed to sites straying from set parameters.
- Simple import of Degree Day data via the Internet to compare data against any energy source.
- Regression Analysis package for professional formulation of energy relationships to other data.
- League Tables that provide comparisons of energy performance across a number of sites.

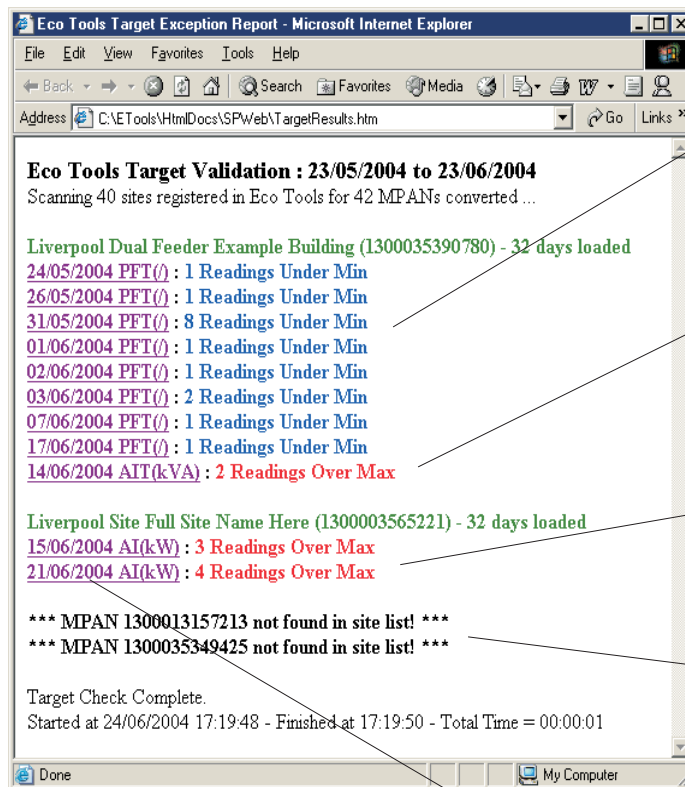
Example;- 32 day Automated HTML Target Exception Report



Professional Extensions

User friendly operation & simple menu system, featuring;-

- Target Exception Report
- Linear Regression
- League Tables
- Degree Days

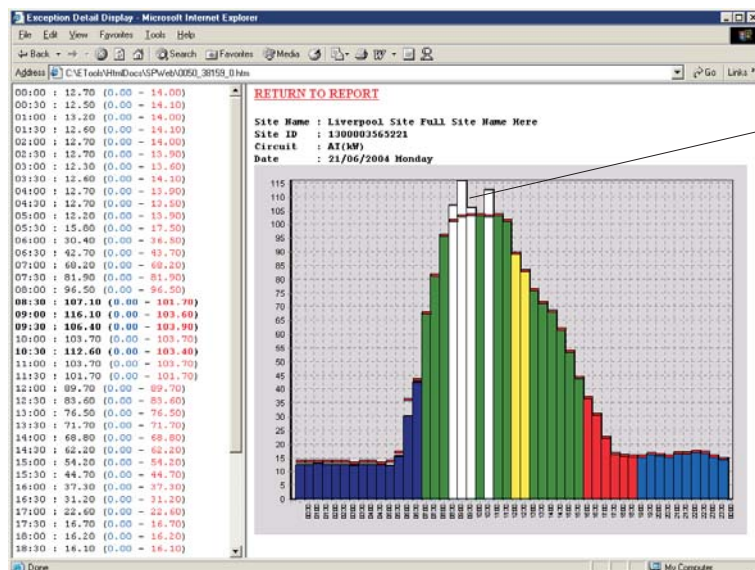


Calculated Power Factor for this site has 8 dates with readings outside the minimum in its M&T profile showing possible failure of PF equipment.

Meter A1 on this site has one date with a reading outside the maximum allowable in its M&T profile.

Meter A1 on this site has two dates with readings outside the maximum allowable in its M&T profile.

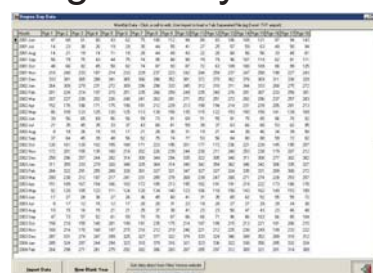
The system also checks to see if there are any new sites you may have forgotten to set up targets for!



Click on any date in the report for a pop-up HTML graph like this.

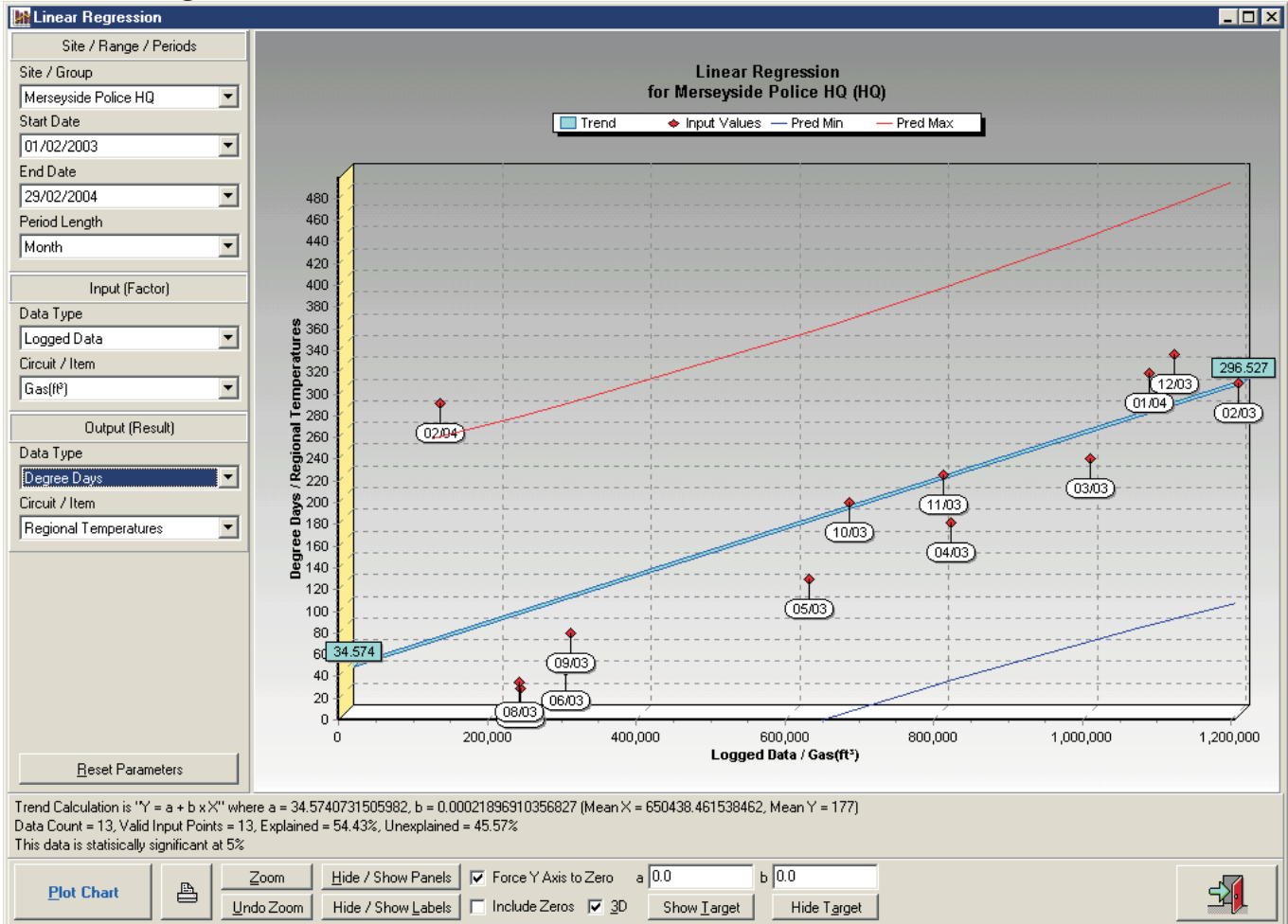
Half hour data in white bars shows data outside parameters. Red line shows maximum set parameter. Blue line shows minimum set parameter. Data for each half hour showing minimum and maximum values in brackets is also displayed with the pop up graph.

Degree Days



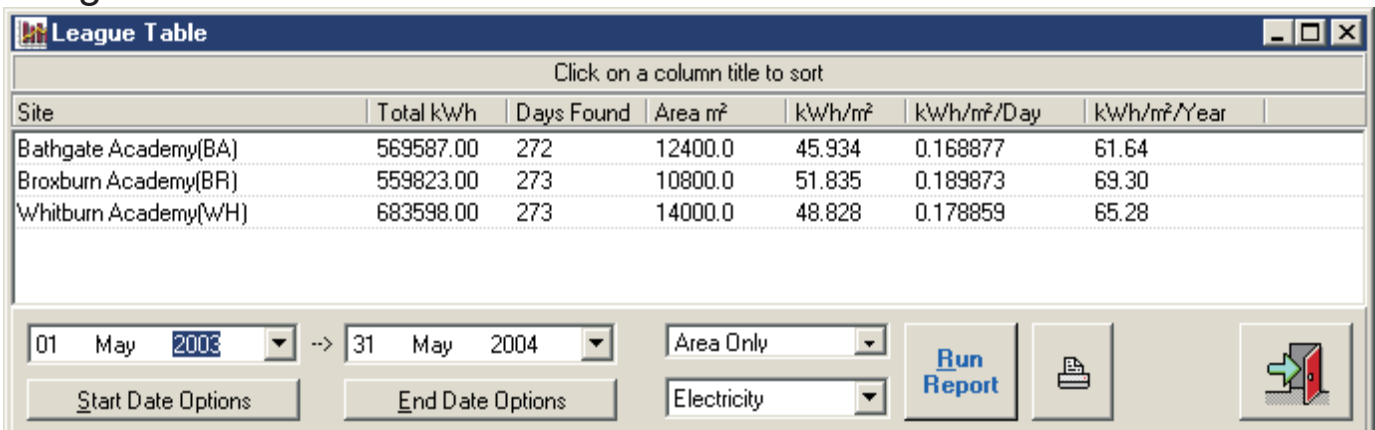
Degree Day Data provided over the Internet for use with Linear Regression Analysis package shown overpage.

Linear Regression Analysis



An example of regression analysis and degree days data. Showing the relationship between main gas consumption and heating degree days. Exceptions are clearly shown above and below expected limits and a formulae showing the relationship calculated. Any exception may be turned off by clicking on a point for the calculation to be redone excluding the switched off anomalies.

League Tables



Click on a column title to sort

Site	Total kWh	Days Found	Area m²	kWh/m²	kWh/m²/Day	kWh/m²/Year
Bathgate Academy(BA)	569587.00	272	12400.0	45.934	0.168877	61.64
Broxburn Academy(BR)	559823.00	273	10800.0	51.835	0.189873	69.30
Whitburn Academy(WH)	683598.00	273	14000.0	48.828	0.178859	65.28

01 May 2003 --> 31 May 2004
 Area Only
 Electricity
 Run Report

From three to three thousand sites, compare each one with the other over a 1 day, 1 week, 1 month or over multiple years. Create a League Table of your best and worst performing sites and monitor their improvement.