



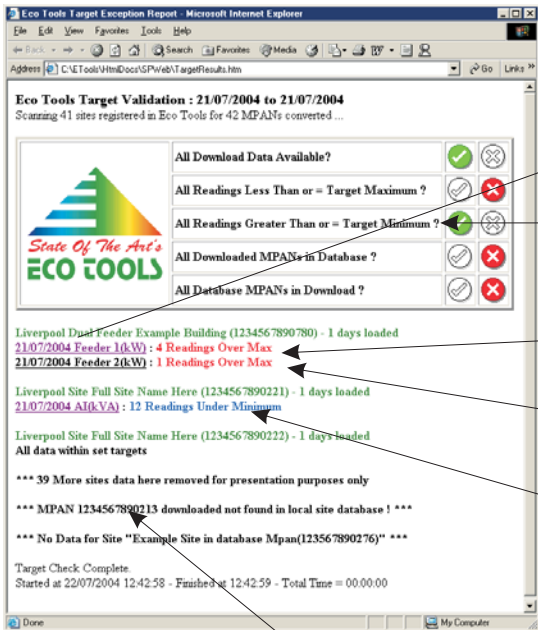
WEB GRABBER

The SP Web Grabber is a utility that will automatically log on to the Scottish Power Web site at a frequency set by the user (typically daily) and download half hourly data. At present this data is usually available for all over 100kw sites with some under 100kw sites now also becoming available. After the data is downloaded the software will automatically complete a number of calculations and will compare the downloaded profile with targets you can set easily for each site you wish to monitor. It will then alert you to any site(s) that fall outside the parameters you have set. A target validation report is produced providing you with the meter name and date and how many if any half hours data fell outside your set parameters for each day downloaded. If all is well 5 green ticks appear at the top of the report and you need do no more. If one red x appears it is recommended you view the entire report. Click on any date showing an anomaly and it will immediately show you the day and meter in graphical and numerical format with the reported anomalies highlighted in white. All data downloaded is also automatically available for our Eco Tools to analyse further. You can set generalised targets or specific ones. For example all power factors calculated below 0.98 or any kilowatt hour meter going above a set value. You can set specific seasonally based daily profile half hour targets using the automatic or manual target setter in our Eco Tools software which this utility requires to operate.

Calculations:

If for example you have available kilowatt hours and kvar hours the system will also calculate half hour power factor and kva hours for the site as well. If you have multiple feeders the system will calculate a power factor for each feeder, total kw hours for the site and total kva hours for the site.

Example Daily Target Exception Report



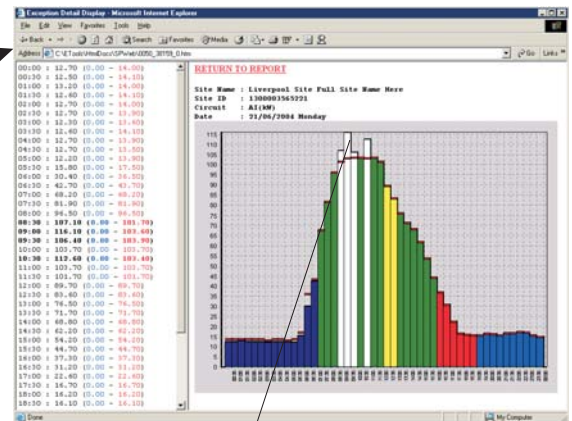
Click on any date in the report for a pop up graph like this.

Five green ticks mean all is well you dont even have to look at the rest of the report. One red x means viewing the report is recommended.

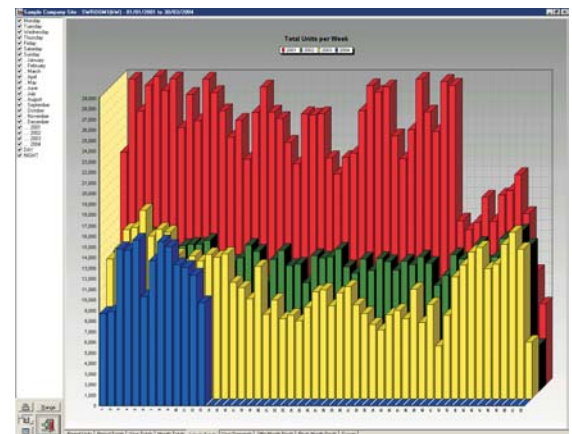
Feeder 1 on this site has 1 date with 7 half hours outside of set parameters

Feeder 2 on this site has 1 date with 1 half hour outside of set parameters

Calculated Power Factor for site has 1 dates with poor PF showing possible failure of PF equipment.



Half hour data in white bars shows data outside parameters, red line shows set parameter maximum. Data for each half hour showing min. & max. Values in brackets is also displayed with a pop up graph.



Because you now have access to your data on your local PC you can also do things you can't do easily on the Internet. Compare multiple years consumptions with this years on a week by week basis and produce your own energy bill to check against the real one.

The system checks to see all the data for sites in the database has been downloaded. It also checks to see if there are any new sites that have been added or if any sites have not had targets set for them.

- Are you a busy Energy Manager?
- Do you waste valuable time checking energy profiles over the Internet and manipulating the data?
- Web Grabber can seamlessly do this task for you.
- Its like having several extra staff working for you. It means you can get on with the real energy saving business while Eco Tools and Web Grabber keep an eye on this essential but time intensive task.